

THE AMERICAN SCENE: 1910-1960



MARCH 14-APRIL 30, 2024



REGINALD MARSH (1898-1954)

Modeling Furs on Union Square, 1940
mixed media on illustration board
26 $\frac{7}{8}$ × 40 $\frac{1}{4}$ in.

AARON BOHRD (1907-1992)

The Short Cut, circa 1950
oil on Masonite
18 × 24 in.



COVER:

REGINALD MARSH (1898-1954)

Taxi Dance Hall, 1947
mixed media on paper laid down on board
26 $\frac{3}{4}$ × 41 in.



WILLIAM R. CHRISTOPHER (1924-1973)

La De Da, 1953, oil on canvas, 29½ in. (painted diameter), 33 × 33 in.

AIDEN LASSELL RIPLEY (1896-1969)

Minnie, Cape Porpoise, Maine, 1934

watercolor and pencil on paper

19³/₄ × 26 in.



DORIS EMRICK LEE (1904-1983)

The Widow, 1935

oil on canvas

25 × 30¹/₈ in.



KENNETH HAYES MILLER (1876-1952)

Washington Square, circa 1935

oil on canvas

13 × 18 in.



REGINALD MARSH (1898-1954)

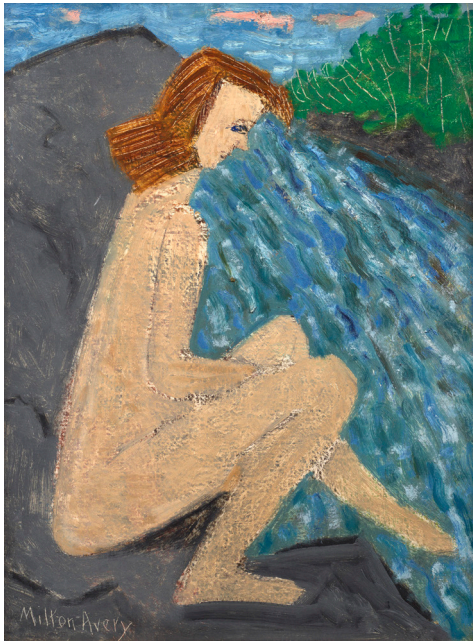
Eldorado: The Sorrow and Futility of Man

Before the Beauty of Woman, 1946

mixed media on paper

22 × 29⁵/₈ in.





MILTON AVERY (1885-1965)

Child in Water, circa 1938

oil on canvas board

23¼ × 17¼ in.

MARGUERITE ZORACH (1887-1968)

Ice Pond, circa 1945

oil on canvas

30 × 44 in.





IVAN ALBRIGHT (1897-1983)

Maker of Dreams, 1928, oil on canvas, 30¼ × 20¼ in.

Debra Force FINE ART, INC.

13 EAST 69TH STREET SUITE 4F NEW YORK 10021

TEL 212.734.3636 INFO@DEBRAFORCE.COM

WWW.DEBRAFORCE.COM

MONDAY-FRIDAY, 10-6; SATURDAYS BY APPOINTMENT

THE AMERICAN SCENE: 1910-1960

MARCH 14-APRIL 30, 2024

Ivan Albright

Milton Avery

Thomas Hart Benton

George Biddle

Aaron Bohrod

Charles Ephraim Burchfield

William R. Christopher

Karl Fortess

William Glackens

Abraham Leon Kroll

Ernest Lawson

Doris Lee

Edward Middleton Manigault

Herman Maril

Reginald Marsh

Kenneth Hayes Miller

Dale Nichols

Aiden Lassell Ripley

Ben Shahn

Everett Shinn

John Sloan

Marguerite Zorach



CHARLES EPHRAIM BURCHFIELD (1893-1967)

Booming White Clouds, 1916, watercolor and pencil on paper, 14 × 20 in.