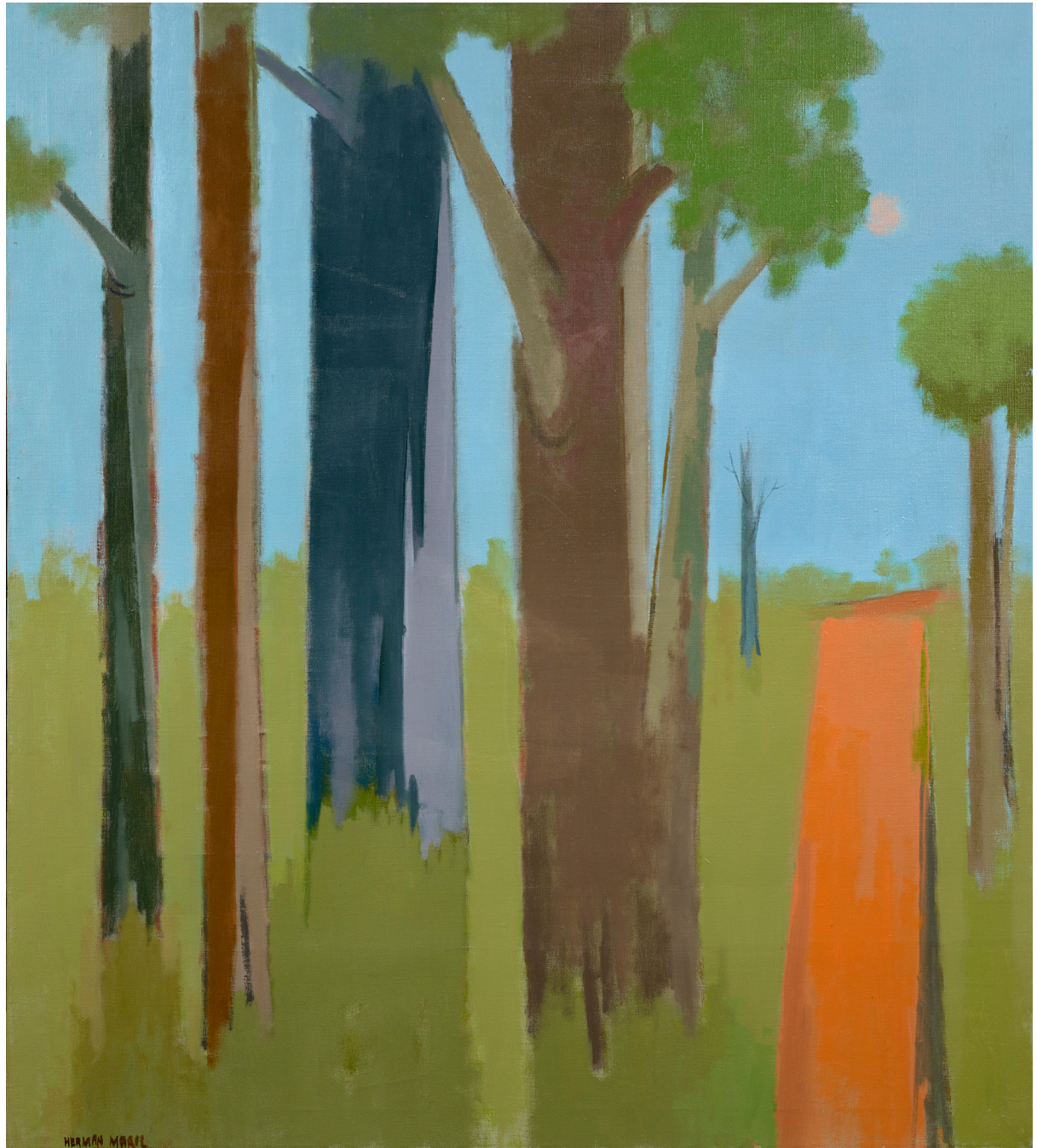


The Legacy of  
HERMAN MARIL:  
Works From 1929-1984

SEPTEMBER 7-OCTOBER 6, 2023





*Interior with Pitcher*, 1931, oil on canvas, 25 x 18 in.



*Coming In*, 1960, casein, watercolor, and pencil on paper, 19½ x 24½ in.



*Intide*, 1958, oil on canvas, 23½ x 40 in.

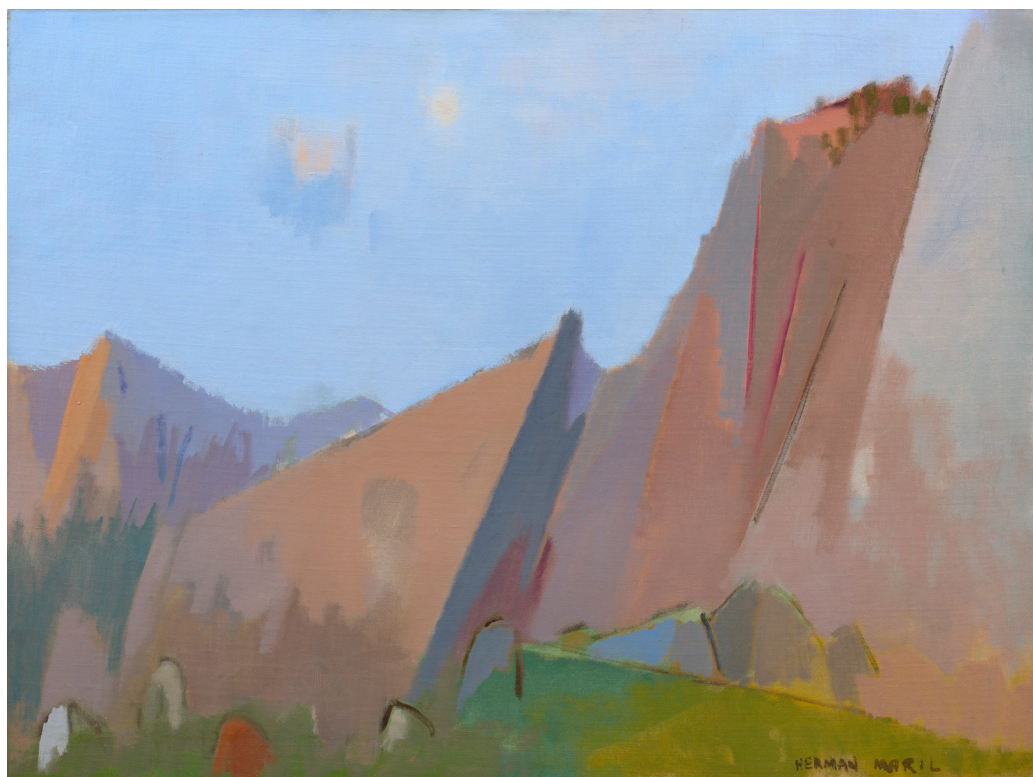


*At the Fair Grounds*, 1946, oil on canvas board, 24 x 30 in.

*Steam Shovel Construction*, 1958  
oil on canvas, 23¾ x 30 in.



*Southwest*, 1972  
oil on canvas, 30¼ x 40¼ in.





*Dark Pines*, 1967, oil on canvas, 36 x 47¾ in.

*Hurricane*, 1954  
oil on canvas, 30 x 38 in.



*Sea and Pink Sky*, 1984  
oil on canvas, 30 x 40½ in.





*The Sea*, circa 1972, tapestry, 47 x 35 in.

*Debra Force* FINE ART, INC.

13 EAST 69TH STREET SUITE 4F NEW YORK 10021

TEL 212.734.3636 INFO@DEBRAFORCE.COM

WWW.DEBRAFORCE.COM

MONDAY-FRIDAY, 10-6; SATURDAYS BY APPOINTMENT

The Legacy of  
HERMAN MARIL:  
Works From 1929-1984

SEPTEMBER 7-OCTOBER 6, 2023



*Horse*, circa 1930s, gouache on paper, 12 x 8 in.

COVER: *Trees and Road*, 1980, oil on canvas, 40 x 36 in.