

Expatriates: The Journey Abroad

JANUARY 21—FEBRUARY 26, 2021



Edward Emerson Simmons

(1852–1931)

The End of the Yard, 1883, oil on canvas
39¼ × 31¾ in.



Colin Campbell Cooper

(1856–1937)

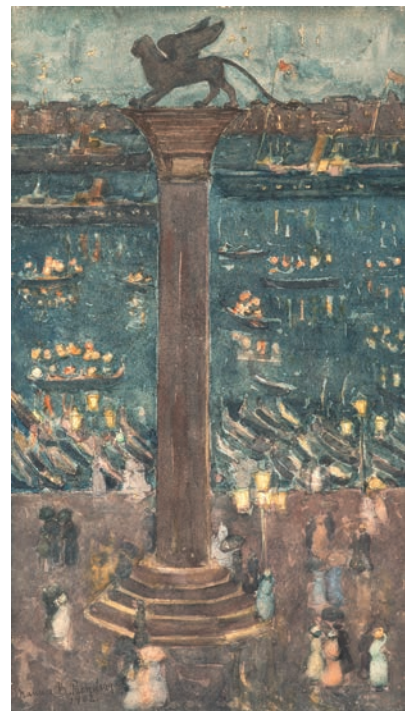
Place de l'Opera, Paris, circa 1906–1911
oil on canvas, 25¼ × 30⅞ in.



Maurice Brazil Prendergast

(1858–1924)

St. Mark's Lion, Venice, circa 1898–1899
watercolor and pencil on paper
18 × 10¾ in.





Robert Henri

(1865–1929)

Modiste (Spanish Girl, Madrid)

1906, oil on canvas

77½ × 37¾ in.

John Singer Sargent

(1856–1925)

Polly Barnard (Girl in White Muslin), 1889, oil on canvas, 32¼ × 26¾ in.



James McNeill Whistler

(1834–1903)

Campanile at Lido, 1879, pastel and charcoal on brown paper, 8 × 11⁷/₈ in.



Jane Peterson

(1876–1965)

Venice, circa 1920s, oil on canvas

12¾ × 16 in.



James Jebusa Shannon

(1862–1923)

Portrait of a Young Woman, circa 1889

oil on canvas, 18 × 14 in.

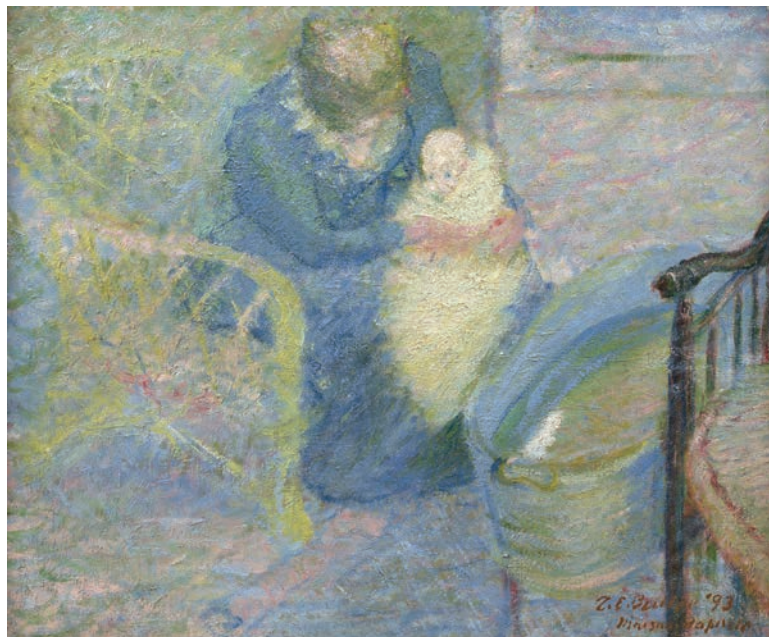


Theodore Earl Butler

(1861–1936)

Maison Baptiste, Giverny, 1893

oil on canvas, 18 × 22 in.



Guy Pène du Bois

(1884–1958)

Approaching Storm, Racetrack, 1929, oil on canvas, 29 × 36³/₈ in. (COVER DETAIL)



BACK COVER:

William Glackens (TOP)

(1870–1938)

The Seine, 1895, oil on canvas, 19⁵/₈ × 24¹/₈ in.

Robert Henri (BOTTOM)

(1865–1929)

The City Island, 1902, oil on canvas, 23³/₄ × 32 in.



Debra Force FINE ART, INC.

13 East 69th Street Suite 4F New York 10021

Tel 212.734.3636 www.debraforce.com

