



The Figure in
American Art

1766—1971

On View

April 23 – June 12, 2015

Also including

THOMAS HART BENTON

FELIX OCTAVIUS CARR DARLEY

ARTHUR BOWEN DAVIES

FREDERICK CARL FRIESEKE

WILLIAM GLACKENS

ROBERT GWATHMEY

GRACE HARTIGAN

HANS HOFMANN

GEORGE BENJAMIN LUKS

FREDERICK WILLIAM MACMONNIES

BROR JULIUS OLSSON NORDFELDT

JOHN SINGER SARGENT

JANET SCUDDER

JAMES JEBUSA SHANNON

BENJAMIN WEST

Among others

Debra Force
FINE ART, INC.



WILLIAM MERRITT CHASE (1849–1916)
Roland Dana Chase, 1905
signed *Wm. M. Chase*, lower left, oil on canvas, 42 × 28 in.



GEORGE WESLEY BELLOWS (1882–1925)
The Black Derby, 1905
signed *Geo Bellows*, upper right, oil on canvas, 26 × 20 in.



EVERETT SHINN (1876–1953)
The Yellow Dancer
signed *E. Shinn* and dated *1911*, lower right, pastel on board, 14³/₈ × 19¹/₂ in.



GEORGE HITCHCOCK (1850–1913)
A Field of Hyacinths, Holland, circa 1890s
signed *Hitchcock*, lower right, oil on canvas, 28½ × 32¼ in.



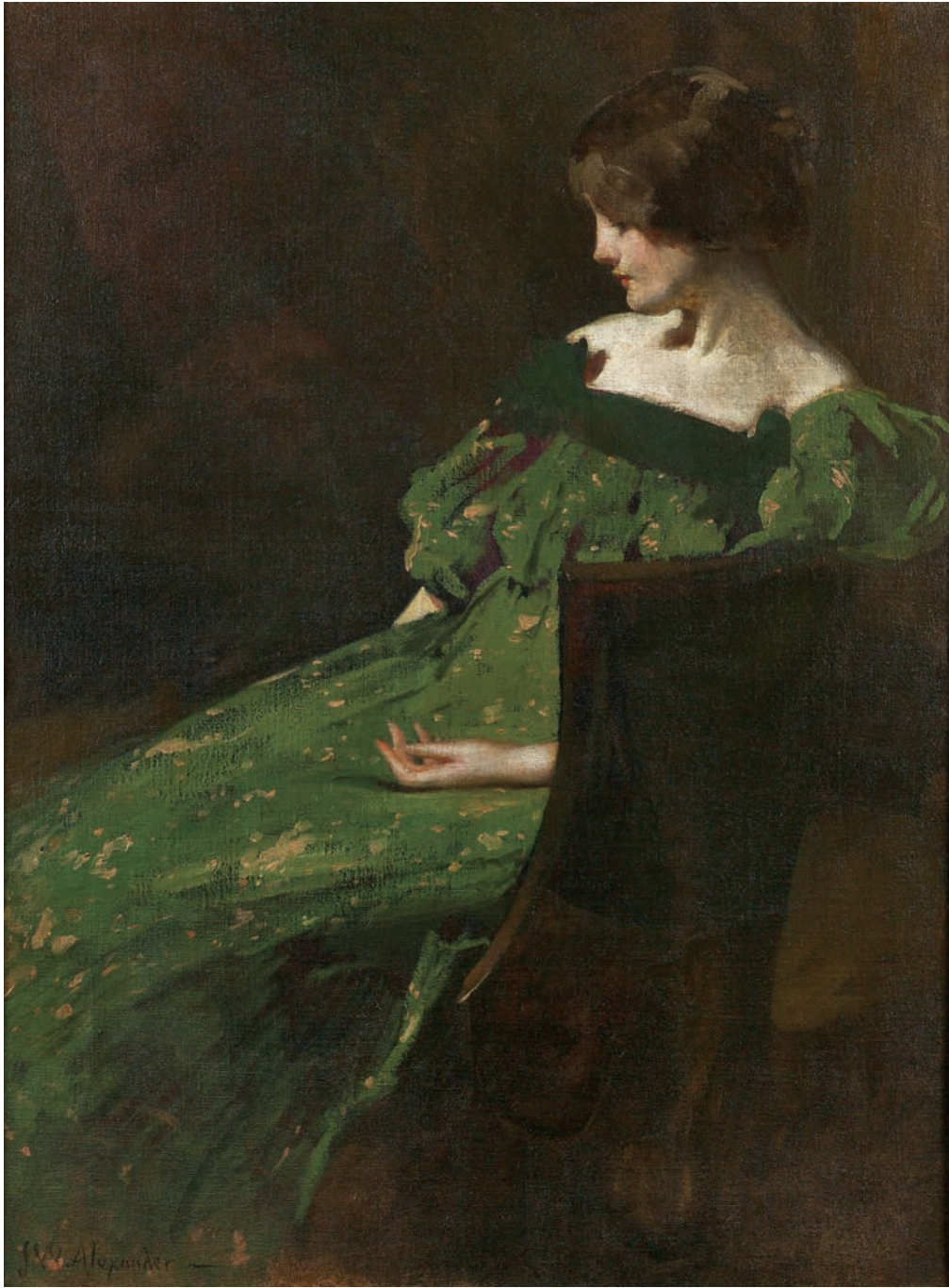
GIFFORD BEAL (1879–1956)
Bass Rocks, Gloucester, circa 1923–30
signed *Gifford Beal*, lower right, oil on board, 20 × 24 in.



EDWARD HENRY POTTHAST (1857–1927)
The Green Umbrella, circa 1910–15
signed *E. Potthast*, lower right, oil on panel, 8¾ × 12 in.



JANE PETERSON (1876–1965)
The Answer, circa 1929
signed *Jane Peterson*, upper and lower right, oil on canvas, 32¼ × 32⅛ in.



JOHN WHITE ALEXANDER (1856–1915)
Green Girl (Juliette), circa 1897–98
signed *J. W. Alexander*, lower left, oil on canvas, 48 × 35½ in.



ROMARE BEARDEN (1911–1988)
Junction Piquette, 1971
fabric collage on canvas, 92 × 68 in.



PHILIP EVERGOOD (1901–1973)
The Future Belongs to Them, 1938–53
signed *Philip Evergood*, lower center, oil on canvas, 60 × 40 in.

Debra Force

FINE ART, INC.

13 East 69th Street Suite 4F New York 10021

Tel 212.734.3636 www.debraforce.com



Left: JOHN GEORGE BROWN (1831–1913)

Buddies

signed *JG Brown NA* and inscribed *copyright*, lower left
oil on canvas, 24 $\frac{1}{4}$ × 16 $\frac{1}{4}$ in.

Cover detail: FREDERICK CHILDE HASSAM (1859–1935)

Man with a Dog, Gloucester

signed *Childe Hassam* and dated 1895, lower left, oil on canvas, 24 $\frac{1}{4}$ × 20 in.